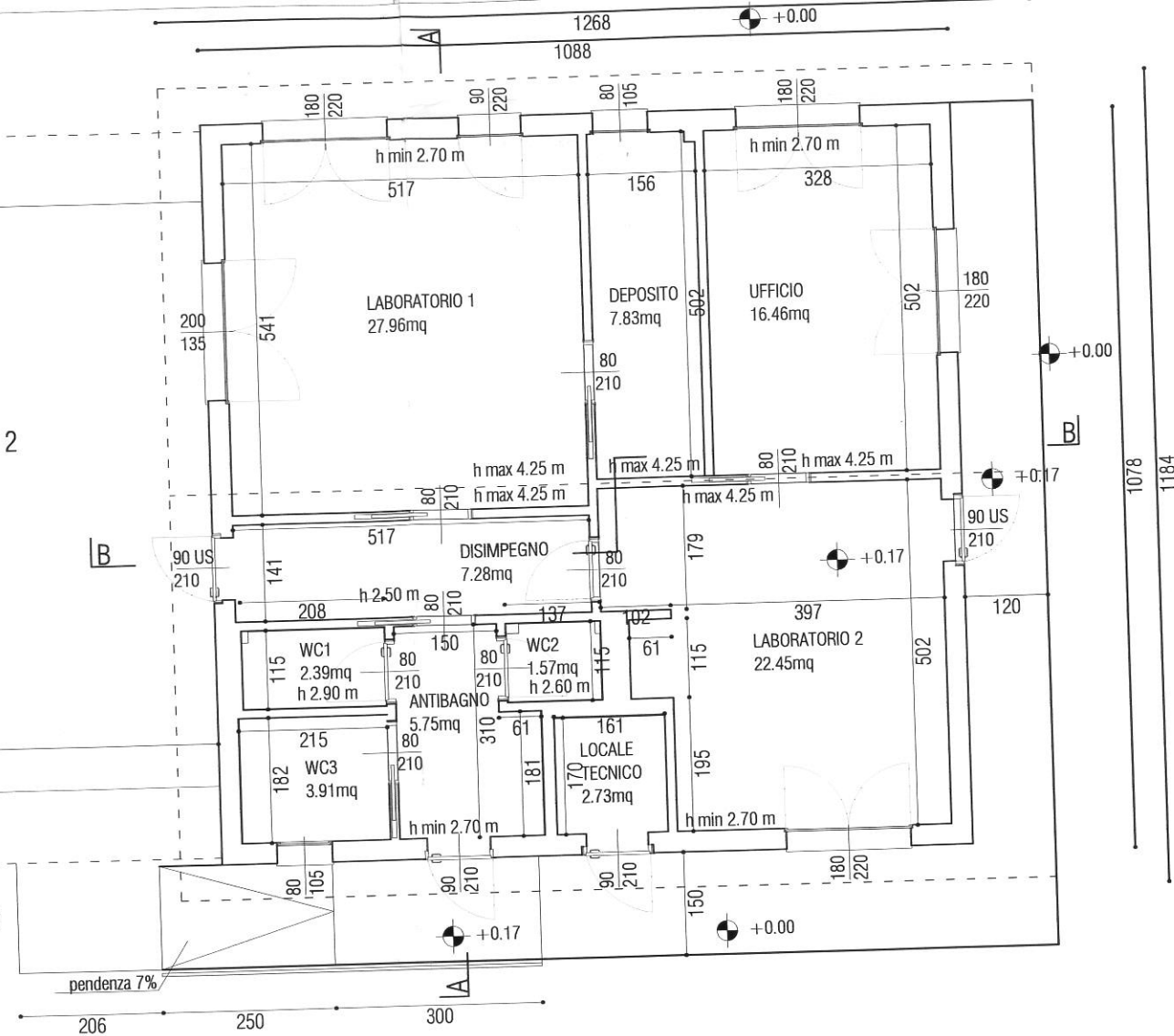
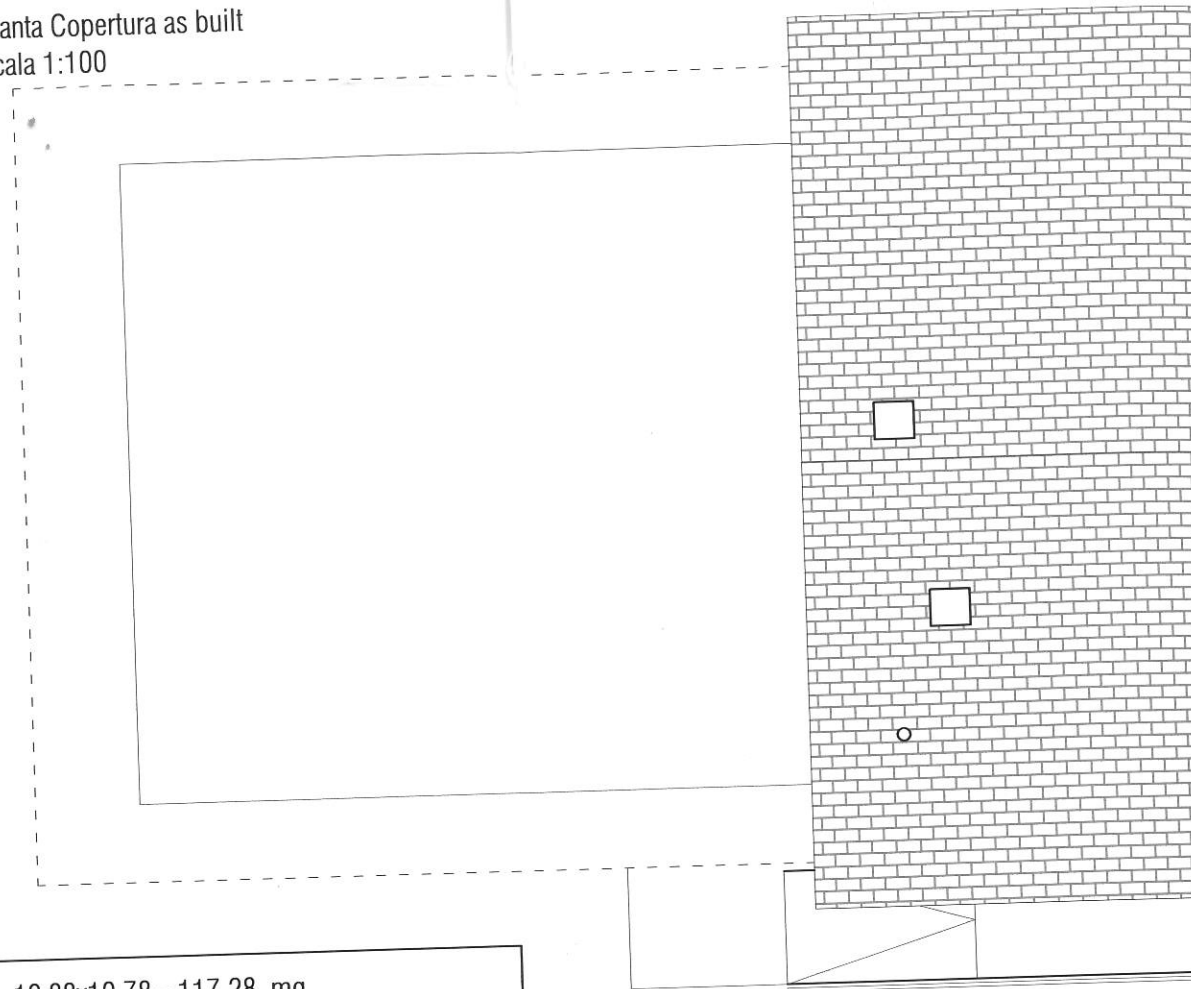


PIASTRA DI FONDAZIONE LOTTO 2  
 quota strutturale +0.02 m  
 dimensioni 9.50m x 8.50m



Pianta Copertura as built  
 scala 1:100

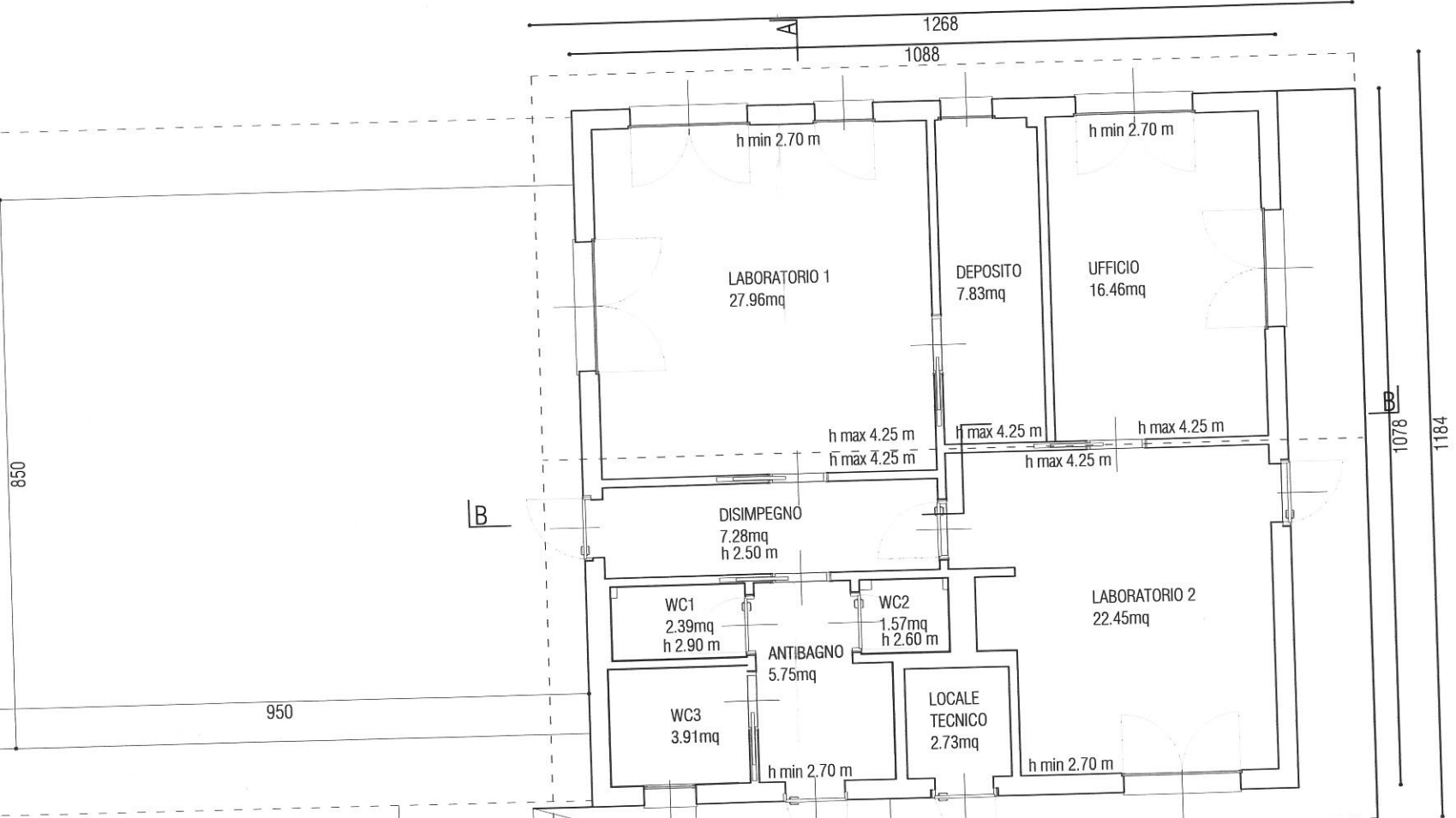


$$SLP = 10.88 \times 10.78 = 117.28 \text{ mq}$$

$$SU = 27.97 + 22.50 + 7.83 + 16.46 + 7.28 + 2.39 + 1.57 + 3.91 + 5.75 + 2.73 = 98.39 \text{ mq}$$

$$V = 117.28 \times 3.00^* = 351.84 \text{ mc}$$

$$*h \text{ virtuale} = 3.00 \text{ m}$$



VERIFICA RAPPORTI AEROILLUMINANTI

LOCALE	SUPERFICIE	SUP. FINESTRA AERANTE	SUP. FINESTRA ILLUMINANTE
Laboratorio 1	$(5.17 \times 5.41) = 27.96 \text{ mq}$	$(0.90 \times 2.20) + (1.80 \times 2.20) + (2.00 \times 1.35) = 8.64 \text{ mq}$	$[0.90 \times (2.20 - 0.60)] + [1.80 \times (2.20 - 0.60)] + (2.00 \times 1.35) = 7.02 \text{ mq}$
Laboratorio 2	$(1.02 \times 1.79) + (3.97 \times 5.02) + (0.61 \times 1.15) = 22.45 \text{ mq}$	$(1.80 \times 2.20) = 3.96 \text{ mq}$	$[(1.80 \times (2.20 - 0.60))] = 2.88 \text{ mq}$
Deposito	$(1.56 \times 5.02) = 7.83 \text{ mq}$	$0.80 \times 1.05 = 0.84 \text{ mq}$	$0.80 \times 1.05 = 0.84 \text{ mq}$
Ufficio	$(3.28 \times 5.02) = 16.46 \text{ mq}$	$(1.80 \times 2.20) \times 2 = 7.92 \text{ mq}$	$[1.80 \times (2.20 - 0.60)] \times 2 = 5.76 \text{ mq}$
Disimpegno	$(5.17 \times 1.41) = 7.28 \text{ mq}$	-----	-----
WC1	$(2.08 \times 1.15) = 2.39 \text{ mq}$	-----	-----
WC2	$(1.37 \times 1.15) = 1.57 \text{ mq}$	-----	-----
WC3	$(2.15 \times 1.82) = 3.91 \text{ mq}$	$(0.80 \times 1.05) = 0.84 \text{ mq}$	$(0.80 \times 1.05) = 0.84 \text{ mq}$
Antibagno	$(1.50 \times 3.10) + (1.81 \times 0.61) = 5.75 \text{ mq}$	-----	-----
Locale tecnico	$(1.61 \times 1.70) = 2.73 \text{ mq}$	-----	-----
<b>TOTALE</b>	<b><math>27.96 + 22.45 + 7.83 + 16.46 + 7.28 + 2.39 + 1.57 + 3.91 + 5.75 + 2.73 = 98.33 \text{ mq}</math></b>		

\*\* aerazione artificiale 12 vol/h